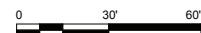
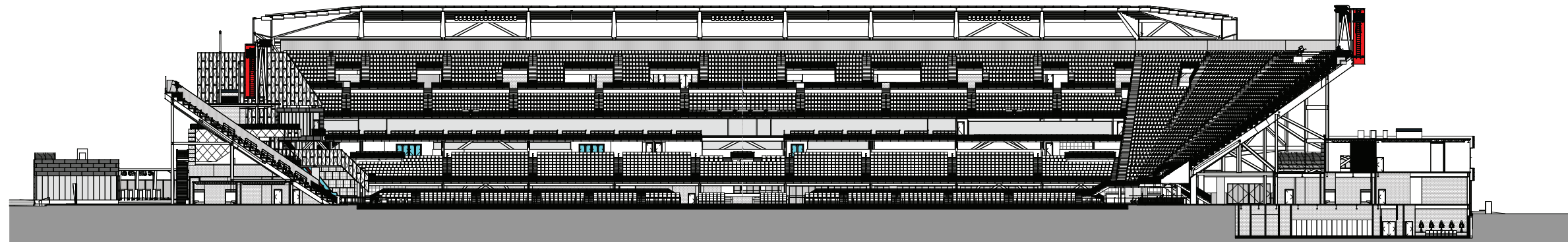


1 E - W SECTION LOOKING NORTH
1" = 30'-0"



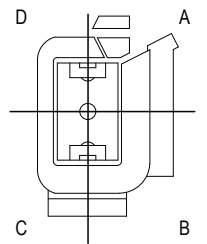
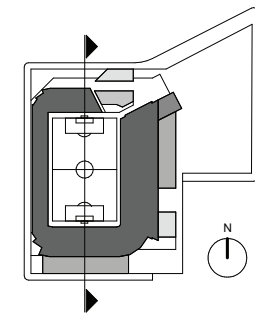
2 N - S SECTION LOOKING EAST
1" = 30'-0"

POPULOUS
Marshall | Moya Design



DC UNITED SOCCER STADIUM
100 Potomac Avenue, SW
Washington, DC 20024

PUD #2 SUBMISSION

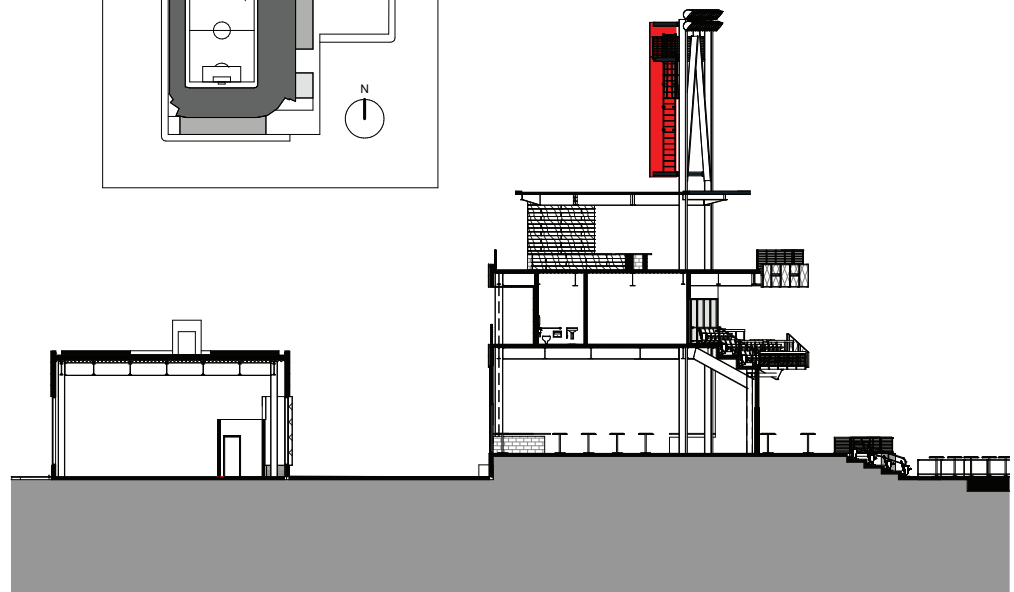
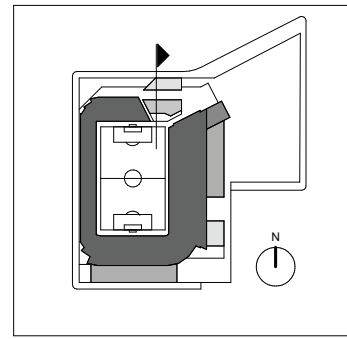


POPULOUS
ARCHITECTS
2018

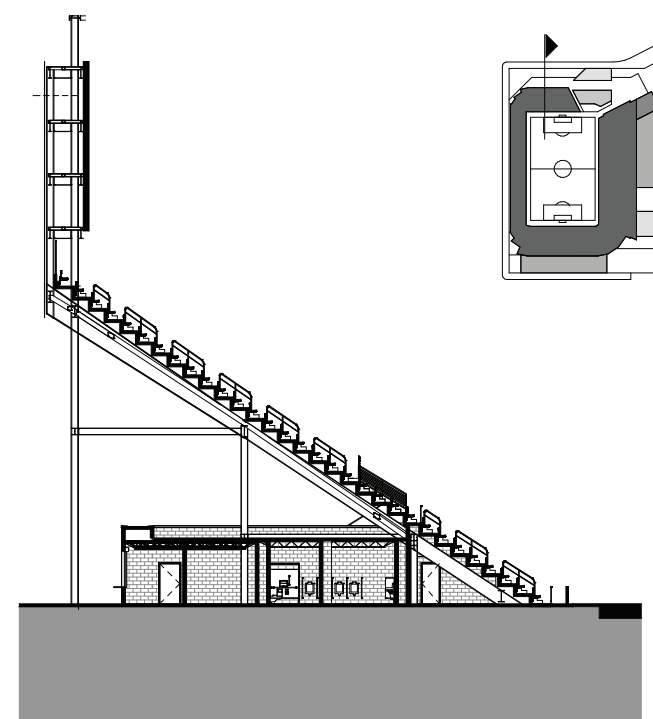
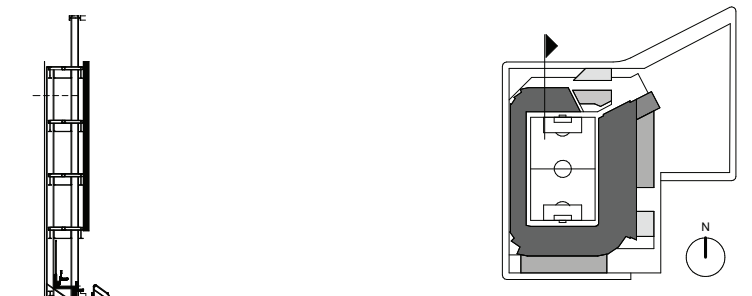
OVERALL BUILDING
SECTIONS

ZONING COMMISSION
District of Columbia
CASE NO.16-02
EXHIBIT NO.10B6

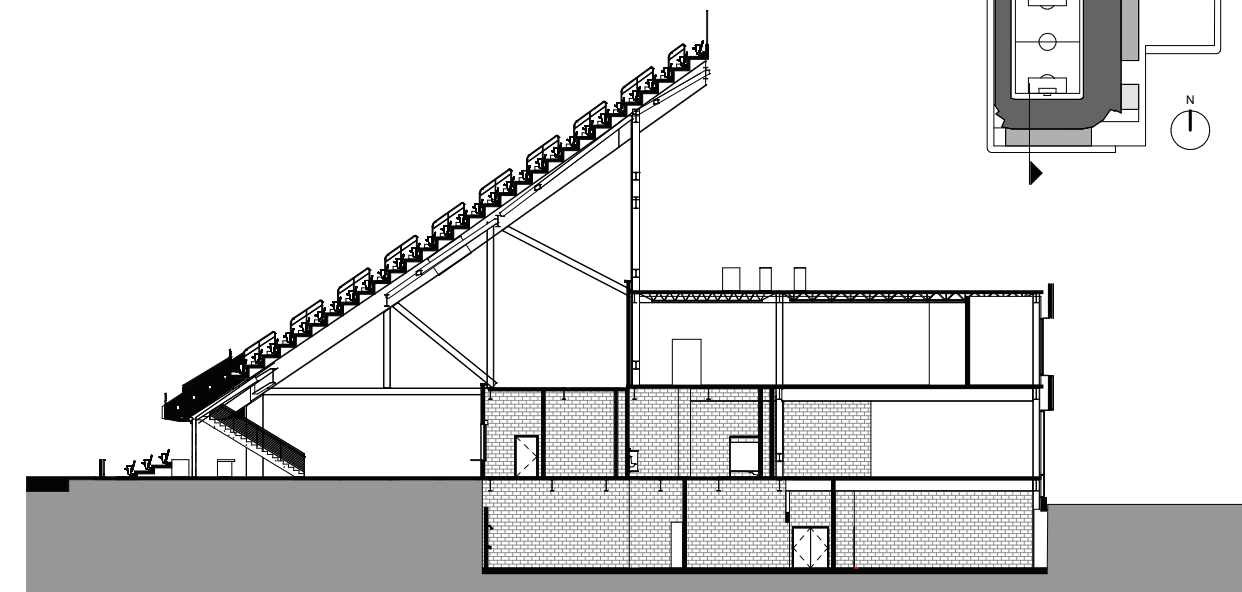
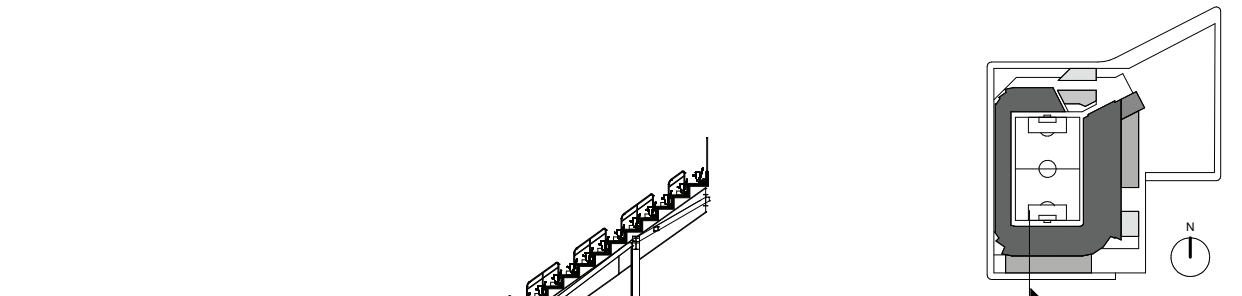
18' 0" 36' 0" 72' 0"



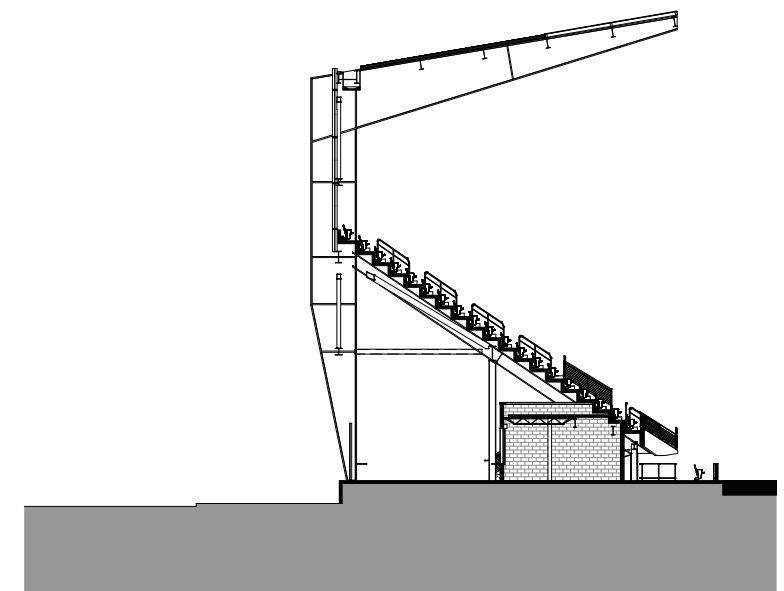
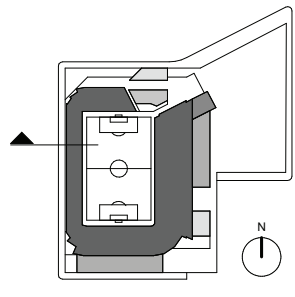
5 NORTH ENLARGED SECTION @ CLUB
1/16" = 1'-0"



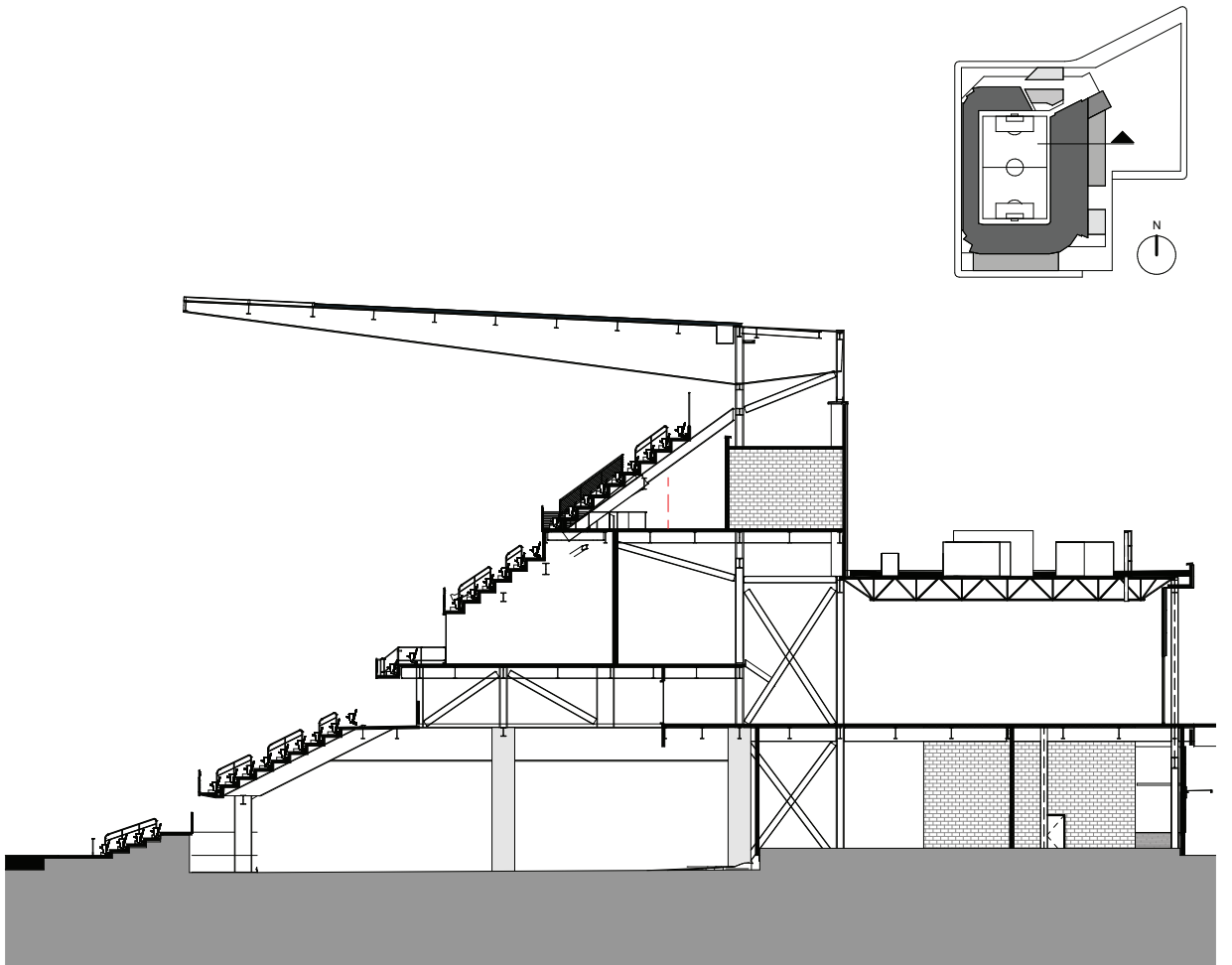
4 NORTH ENLARGED SECTION
1/16" = 1'-0"



3 SOUTH ENLARGED SECTION
1/16" = 1'-0"



2 EAST ENLARGED SECTION
1/16" = 1'-0"



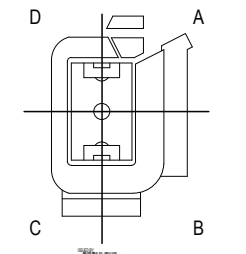
1/16" = 1'-0"

POPULOUS
Marshall | Moya Design



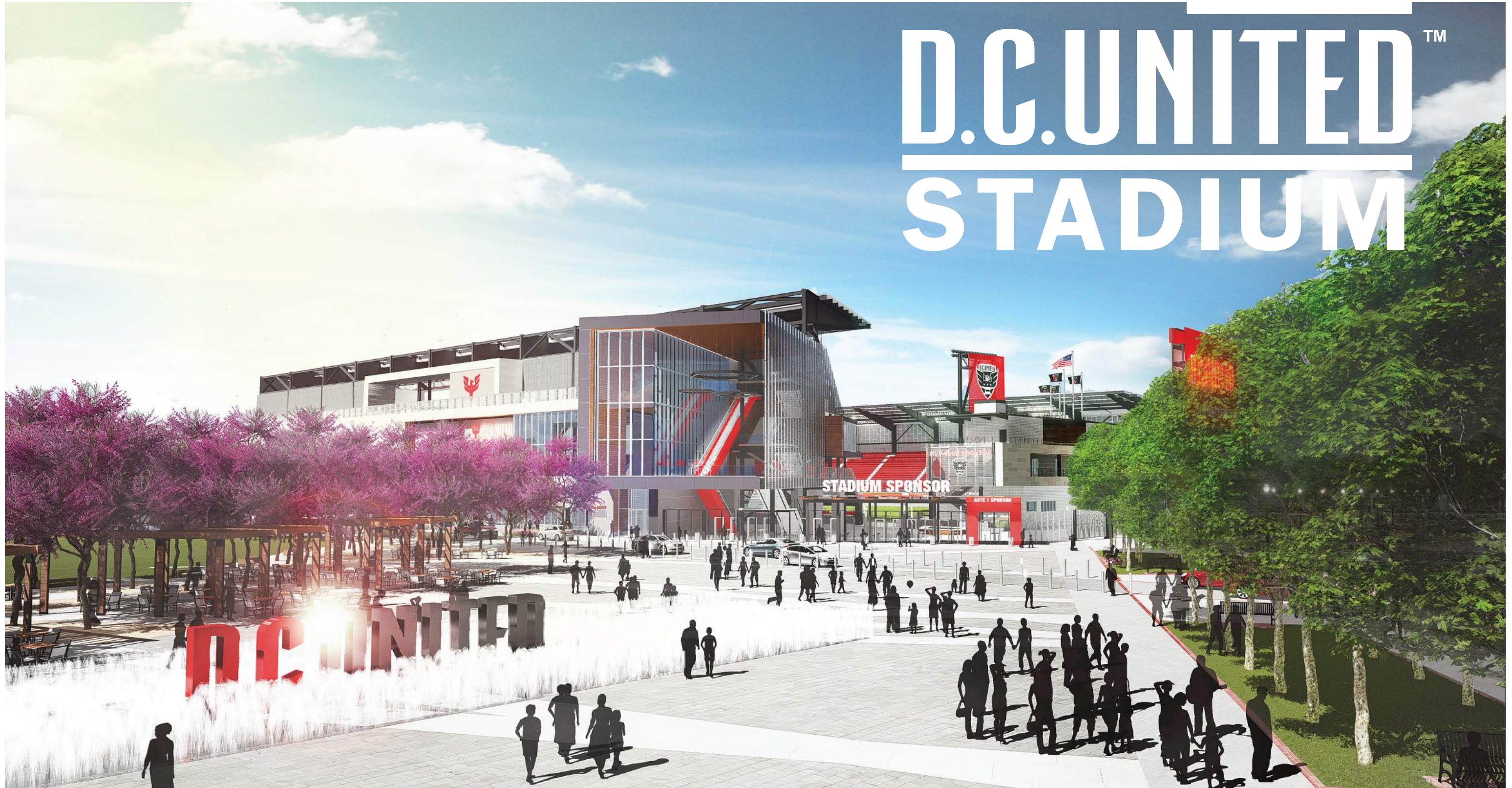
DC UNITED SOCCER STADIUM
100 Potomac Avenue, SW
Washington, DC 20024

PUD #2 SUBMISSION



ENLARGED BUILDING SECTIONS

D.C. UNITED™ STADIUM



SECTION

05

EXTERIOR
FINISHES

EXTERIOR
RENDERINGS

- 5.01 EXTERIOR MATERIAL INDEX
- 5.02 EXTERIOR MATERIAL PHOTOS
- 5.03 EXTERIOR MATERIAL INDEX
- 5.04 EXTERIOR MATERIAL PHOTOS
- 5.05 EXTERIOR MATERIAL INDEX
- 5.06 EXTERIOR MATERIAL PHOTOS
- 5.07 1/1 1" DIA. PERF PATTERN
- 5.08 1/1 CUSTOM PERF PATTERN

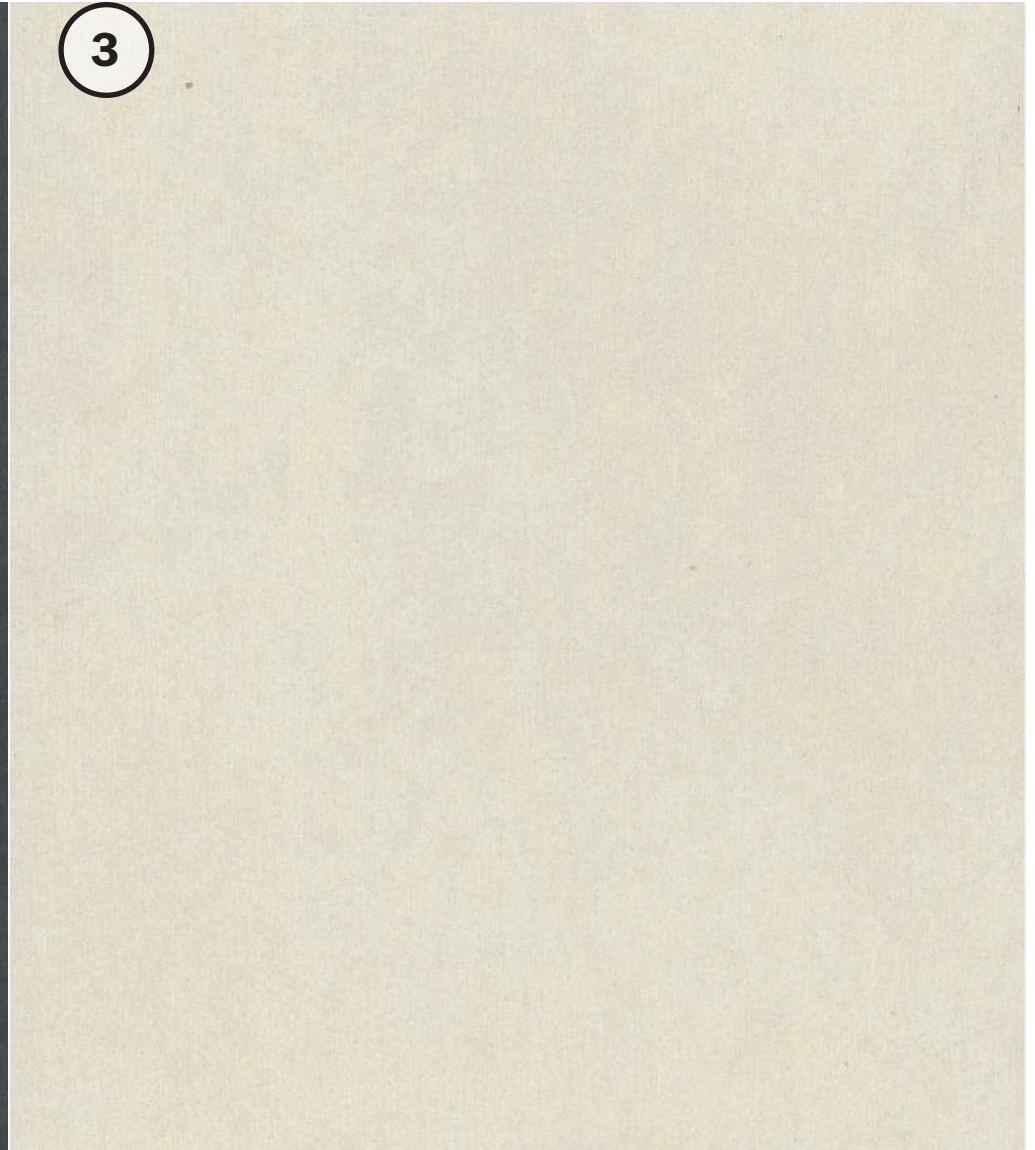
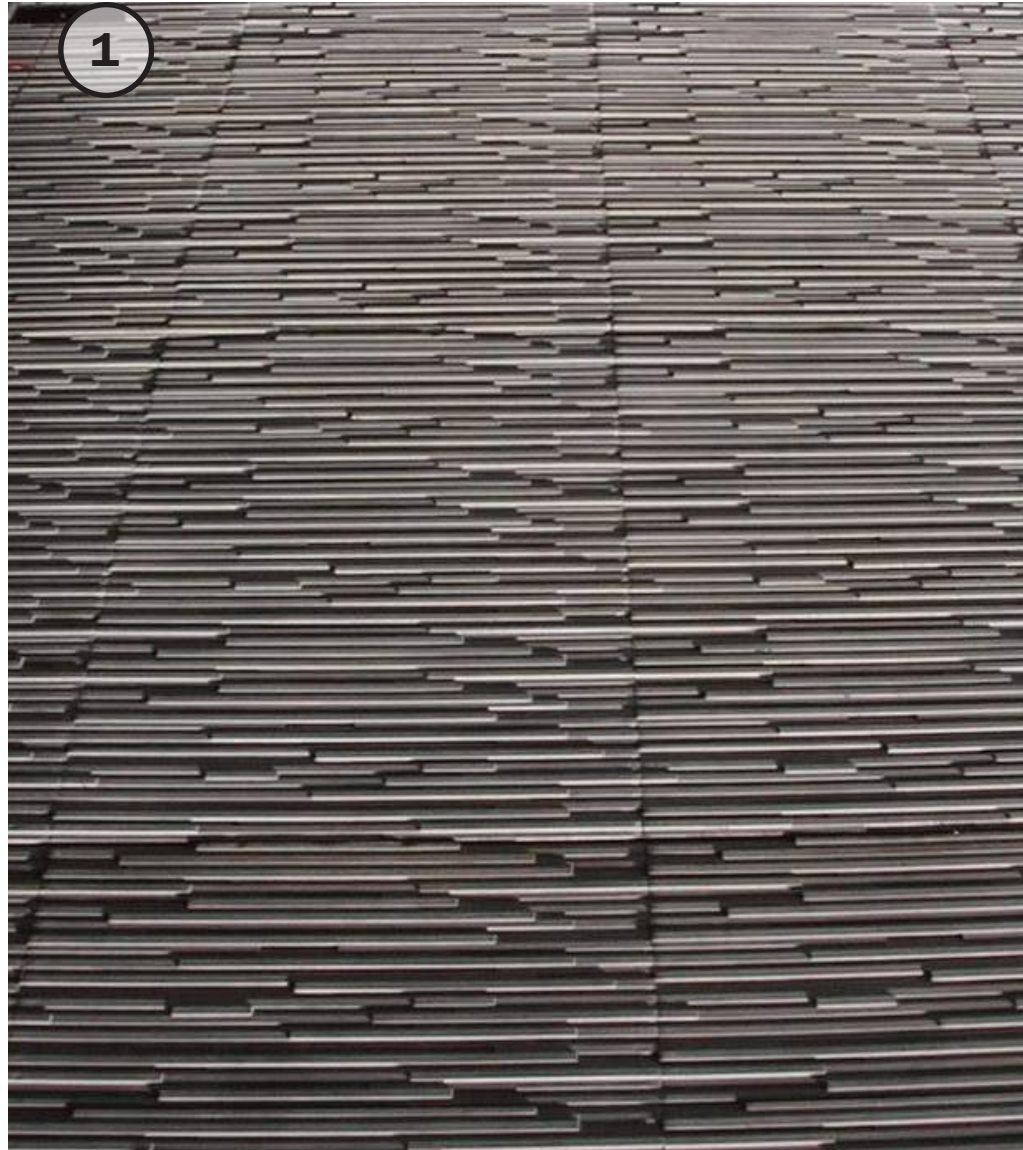
- 5.09 NORTHEAST AERIAL RENDERING
- 5.10 NORTHEAST AERIAL RENDERING W/ PARCEL B DEVELOPMENT
- 5.11 EXTERIOR MATERIAL INDEX
- 5.12 NORTHEAST ENTRY GATE ELEVATED RENDERING
- 5.13 NORTHEAST ENTRY GATE RENDERING
- 5.14 1ST STREET LOOKING SOUTH RENDERING
- 5.15 EXTERIOR MATERIAL INDEX
- 5.16 TEAM STORE ENTRY RENDERING
- 5.17 NORTH ELEVATED PLAZA RENDERING
- 5.18 NORTHWEST ENTRY GATE RENDERING
- 5.19 EXTERIOR MATERIAL INDEX
- 5.20 NORTHWEST ENTRY GATE ELEVATED RENDERING
- 5.21 2ND STREET PARKLET 1 RENDERING
- 5.22 2ND STREET PARKLET 3 RENDERING
- 5.23 SOUTHWEST ENTRY GATE ELEVATED RENDERING
- 5.24 SOUTHWEST ENTRY GATE RENDERING
- 5.25 EXTERIOR MATERIAL INDEX
- 5.26 DCU TEAM OFFICE ENTRY RENDERING
- 5.27 EXTERIOR MATERIAL INDEX
- 5.28 DCU SOUTHEAST STAFF & SERVICE ENTRY RENDERING
- 5.29 1ST STREET W/ PARCEL B DEVELOPMENT RENDERING
- 5.30 1ST STREET @ STAFF ENTRY & TICKETING OFFICE RENDERING
- 5.31 EXTERIOR MATERIAL INDEX
- 5.32 1ST STREET @ PREMIUM FAN ENTRY RENDERING
- 5.33 NORTHEAST PLAZA W/ PARCEL B DEVELOPMENT RENDERING
- 5.34 NORTHEAST PLAZA W/ PARCEL B DEVELOPMENT AERIAL RENDERING

D.C. UNITED STADIUM EXTERIOR MATERIAL INDEX

1. CAST-IN-PLACE CONCRETE - RANDOM WOOD PLANK FORM-LINER - COLOR GRAY
2. EQUITONE* [tective] FIBRE CEMENT FACADE PANEL - COLOR TE80
3. EQUITONE* [tective] FIBRE CEMENT FACADE PANEL - COLOR TE00
4. EQUITONE* [tective] FIBRE CEMENT FACADE PANEL - COLOR TE10
5. EQUITONE [tective] FIBRE CEMENT FACADE PANEL - COLOR TE60
6. PRODEMA* NATURAL WOOD FINISHED PANEL - COLOR RUSTIK
7. VMZ* ZINC METAL PANEL - INTERLOCKING PATTERN - COLOR QUARTZ
8. ANODIZED ALUMINUM CURTAIN WALL MULLIONS
9. SUNGUARD* INSULATED GLASS UNIT - SUPERNEUTRAL 54
10. INSULATED GLASS UNIT - SPANDREL - COLOR WHITE
11. ANODIZED ALUMINUM METAL PANEL - CUSTOM PERFORATION PATTERN
12. ANODIZED ALUMINUM METAL PANEL - 1" DIAMETER PERFORATION PATTERN
13. MILL FINISHED ALUMINUM METAL PANEL - NO PERFORATION PATTERN
14. BENJAMIN MOORE* PAINT - COLOR RACCOON FUR - DARK GRAY
15. RED METAL PANEL @ ESCALATOR ENCLOSURE
16. RED FABRIC SCRIM @ LIGHT BANNERS
17. GLASS PV PANELS
18. DEEP TRAY GREEN ROOF SYSTEM

SAMPLE BOARDS WILL BE PROVIDED AT HEARING

**Manufacturers and Product Identifications are provided herein only to serve as the basis of design. Alternative manufacturers of similar materials may be considered.*

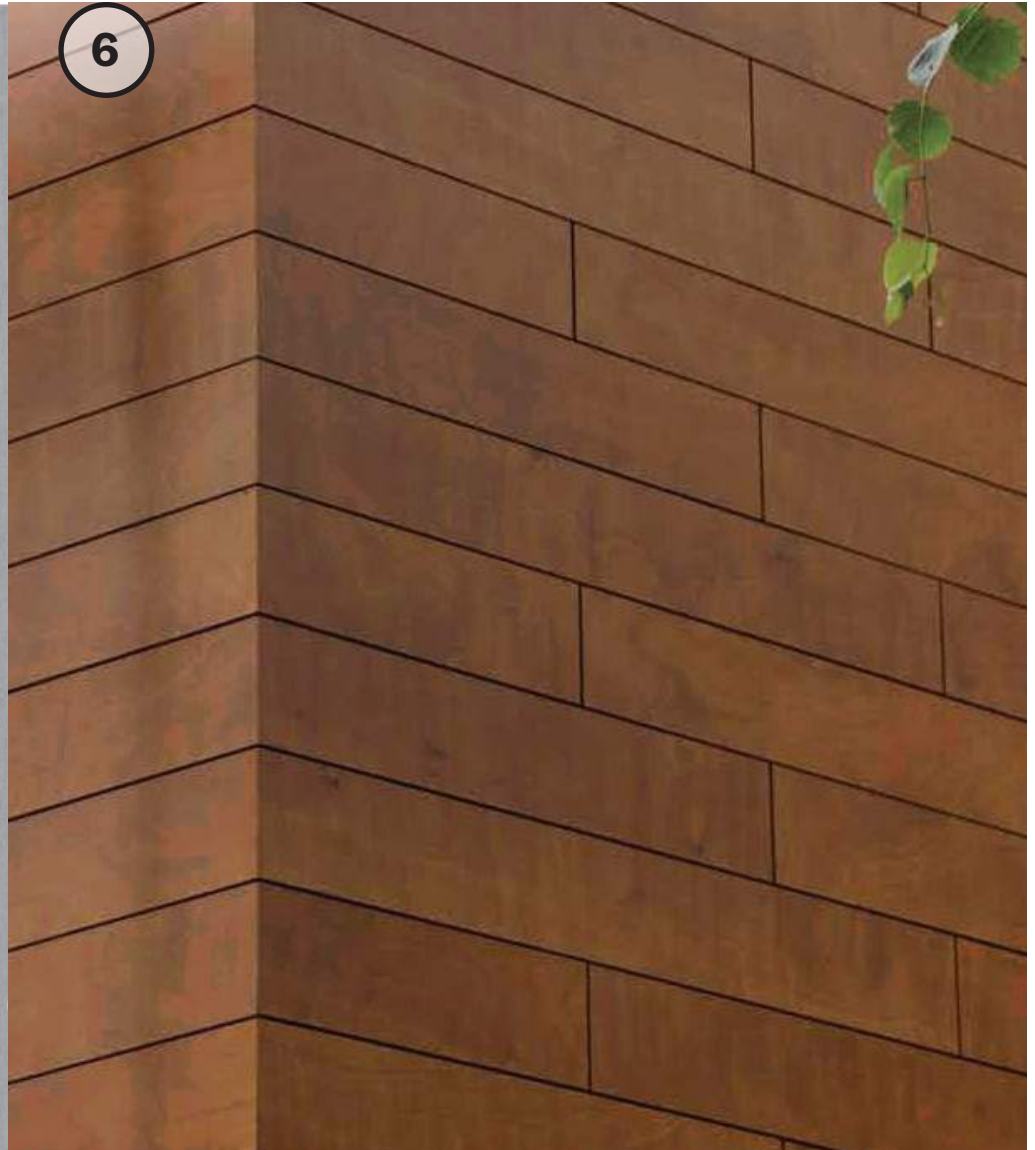
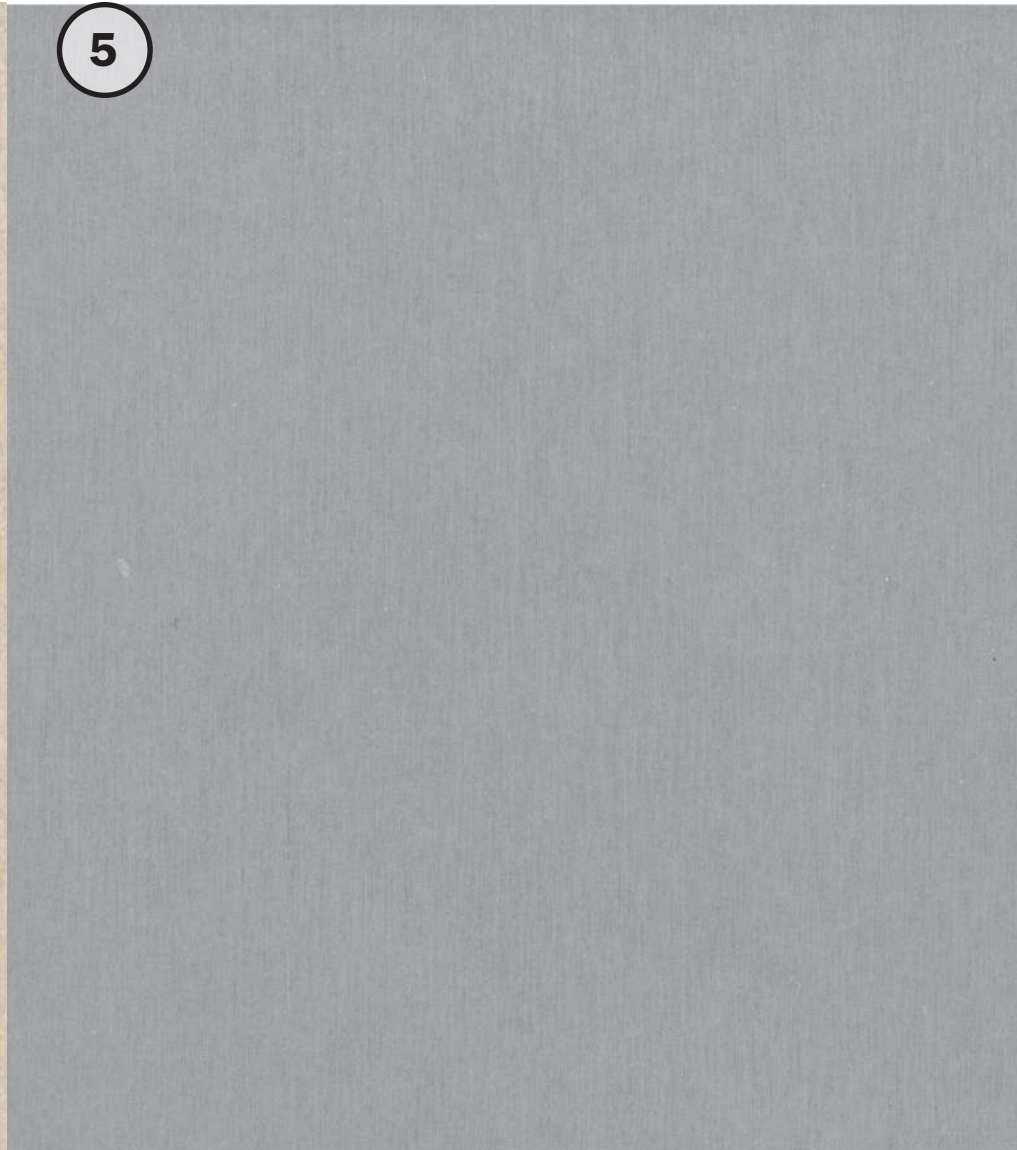
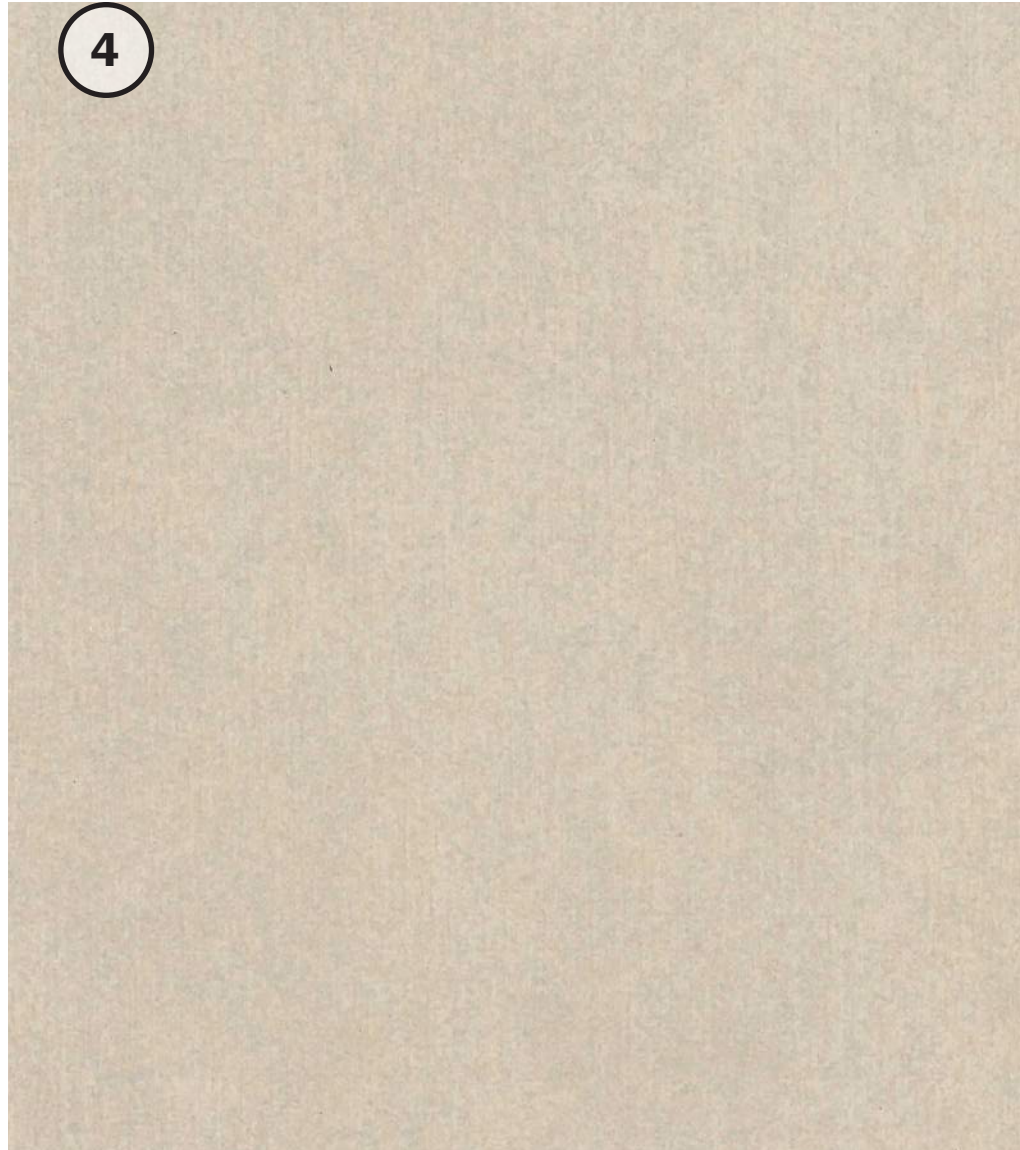


D.C. UNITED STADIUM EXTERIOR MATERIAL INDEX

1. CAST-IN-PLACE CONCRETE - RANDOM WOOD PLANK FORM-LINER - COLOR GRAY
2. EQUITONE* [tective] FIBRE CEMENT FACADE PANEL - COLOR TE80
3. EQUITONE* [tective] FIBRE CEMENT FACADE PANEL - COLOR TE00
4. EQUITONE* [tective] FIBRE CEMENT FACADE PANEL - COLOR TE10
5. EQUITONE [tective] FIBRE CEMENT FACADE PANEL - COLOR TE60
6. PRODEMA* NATURAL WOOD FINISHED PANEL - COLOR RUSTIK
7. VMZ* ZINC METAL PANEL - INTERLOCKING PATTERN - COLOR QUARTZ
8. ANODIZED ALUMINUM CURTAIN WALL MULLIONS
9. SUNGUARD* INSULATED GLASS UNIT - SUPERNEUTRAL 54
10. INSULATED GLASS UNIT - SPANDREL - COLOR WHITE
11. ANODIZED ALUMINUM METAL PANEL - CUSTOM PERFORATION PATTERN
12. ANODIZED ALUMINUM METAL PANEL - 1" DIAMETER PERFORATION PATTERN
13. MILL FINISHED ALUMINUM METAL PANEL - NO PERFORATION PATTERN
14. BENJAMIN MOORE* PAINT - COLOR RACCOON FUR - DARK GRAY
15. RED METAL PANEL @ ESCALATOR ENCLOSURE
16. RED FABRIC SCRIM @ LIGHT BANNERS
17. GLASS PV PANELS
18. DEEP TRAY GREEN ROOF SYSTEM

SAMPLE BOARDS WILL BE PROVIDED AT HEARING

**Manufacturers and Product Identifications are provided herein only to serve as the basis of design. Alternative manufacturers of similar materials may be considered.*

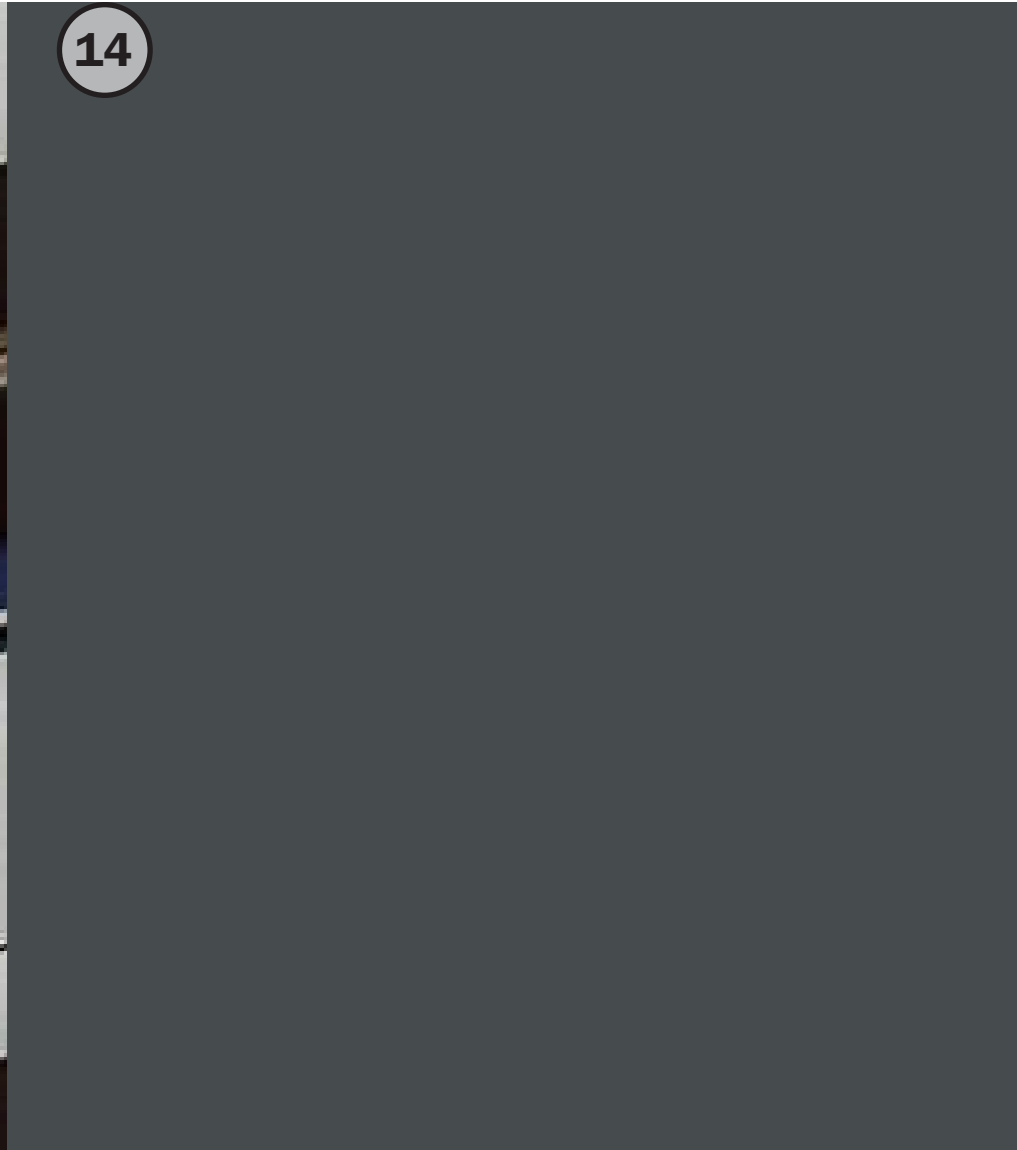


D.C. UNITED STADIUM EXTERIOR MATERIAL INDEX

1. CAST-IN-PLACE CONCRETE - RANDOM WOOD PLANK FORM-LINER - COLOR GRAY
2. EQUITONE* [tective] FIBRE CEMENT FACADE PANEL - COLOR TE80
3. EQUITONE* [tective] FIBRE CEMENT FACADE PANEL - COLOR TE00
4. EQUITONE* [tective] FIBRE CEMENT FACADE PANEL - COLOR TE10
5. EQUITONE [tective] FIBRE CEMENT FACADE PANEL - COLOR TE60
6. PRODEMA* NATURAL WOOD FINISHED PANEL - COLOR RUSTIK
7. VMZ* ZINC METAL PANEL - INTERLOCKING PATTERN - COLOR QUARTZ
8. ANODIZED ALUMINUM CURTAIN WALL MULLIONS
9. SUNGUARD* INSULATED GLASS UNIT - SUPERNEUTRAL 54
10. INSULATED GLASS UNIT - SPANDREL - COLOR WHITE
11. ANODIZED ALUMINUM METAL PANEL - CUSTOM PERFORATION PATTERN
12. ANODIZED ALUMINUM METAL PANEL - 1" DIAMETER PERFORATION PATTERN
13. MILL FINISHED ALUMINUM METAL PANEL - NO PERFORATION PATTERN
14. BENJAMIN MOORE* PAINT - COLOR RACCOON FUR - DARK GRAY
15. RED METAL PANEL @ ESCALATOR ENCLOSURE
16. RED FABRIC SCRIM @ LIGHT BANNERS
17. GLASS PV PANELS
18. DEEP TRAY GREEN ROOF SYSTEM

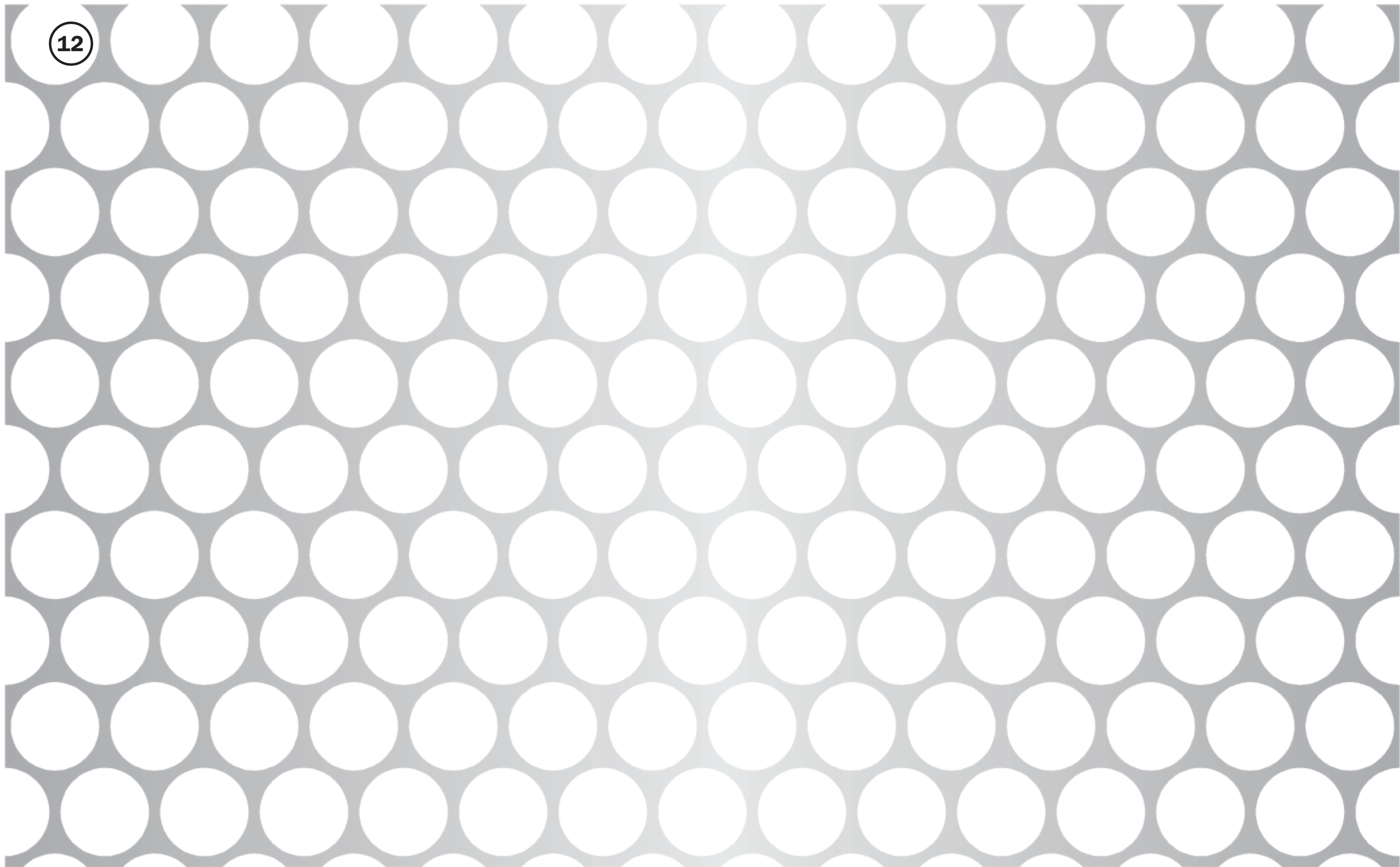
SAMPLE BOARDS WILL BE PROVIDED AT HEARING

**Manufacturers and Product Identifications are provided herein only to serve as the basis of design. Alternative manufacturers of similar materials may be considered.*





12





5.09 NORTHEAST AERIAL RENDERING



D.C. UNITED STADIUM EXTERIOR MATERIAL INDEX

1. CAST-IN-PLACE CONCRETE - RANDOM WOOD PLANK FORM-LINER - COLOR GRAY
2. EQUITONE* [tective] FIBRE CEMENT FACADE PANEL - COLOR TE80
3. EQUITONE* [tective] FIBRE CEMENT FACADE PANEL - COLOR TE00
4. EQUITONE* [tective] FIBRE CEMENT FACADE PANEL - COLOR TE10
5. EQUITONE [tective] FIBRE CEMENT FACADE PANEL - COLOR TE60
6. PRODEMA* NATURAL WOOD FINISHED PANEL - COLOR RUSTIK
7. VMZ* ZINC METAL PANEL - INTERLOCKING PATTERN - COLOR QUARTZ
8. ANODIZED ALUMINUM CURTAIN WALL MULLIONS
9. SUNGUARD* INSULATED GLASS UNIT - SUPERNEUTRAL 54
10. INSULATED GLASS UNIT - SPANDREL - COLOR WHITE
11. ANODIZED ALUMINUM METAL PANEL - CUSTOM PERFORATION PATTERN
12. ANODIZED ALUMINUM METAL PANEL - 1" DIAMETER PERFORATION PATTERN
13. MILL FINISHED ALUMINUM METAL PANEL - NO PERFORATION PATTERN
14. BENJAMIN MOORE* PAINT - COLOR RACCOON FUR - DARK GRAY
15. RED METAL PANEL @ ESCALATOR ENCLOSURE
16. RED FABRIC SCRIM @ LIGHT BANNERS
17. GLASS PV PANELS
18. DEEP TRAY GREEN ROOF SYSTEM

SAMPLE BOARDS WILL BE PROVIDED AT HEARING

**Manufacturers and Product Identifications are provided herein only to serve as the basis of design. Alternative manufacturers of similar materials may be considered.*



NORTHEAST ENTRY GATE ELEVATED
RENDERING



5.13 NORTHEAST ENTRY GATE RENDERING



D.C. UNITED STADIUM EXTERIOR MATERIAL INDEX

1. CAST-IN-PLACE CONCRETE - RANDOM WOOD PLANK FORM-LINER - COLOR GRAY
2. EQUITONE* [tective] FIBRE CEMENT FACADE PANEL - COLOR TE80
3. EQUITONE* [tective] FIBRE CEMENT FACADE PANEL - COLOR TE00
4. EQUITONE* [tective] FIBRE CEMENT FACADE PANEL - COLOR TE10
5. EQUITONE [tective] FIBRE CEMENT FACADE PANEL - COLOR TE60
6. PRODEMA* NATURAL WOOD FINISHED PANEL - COLOR RUSTIK
7. VMZ* ZINC METAL PANEL - INTERLOCKING PATTERN - COLOR QUARTZ
8. ANODIZED ALUMINUM CURTAIN WALL MULLIONS
9. SUNGUARD* INSULATED GLASS UNIT - SUPERNEUTRAL 54
10. INSULATED GLASS UNIT - SPANDREL - COLOR WHITE
11. ANODIZED ALUMINUM METAL PANEL - CUSTOM PERFORATION PATTERN
12. ANODIZED ALUMINUM METAL PANEL - 1" DIAMETER PERFORATION PATTERN
13. MILL FINISHED ALUMINUM METAL PANEL - NO PERFORATION PATTERN
14. BENJAMIN MOORE* PAINT - COLOR RACCOON FUR - DARK GRAY
15. RED METAL PANEL @ ESCALATOR ENCLOSURE
16. RED FABRIC SCRIM @ LIGHT BANNERS
17. GLASS PV PANELS
18. DEEP TRAY GREEN ROOF SYSTEM

SAMPLE BOARDS WILL BE PROVIDED AT HEARING

**Manufacturers and Product Identifications are provided herein only to serve as the basis of design. Alternative manufacturers of similar materials may be considered.*